



SKYLINE
WHITE SALMON HEALTH WASHINGTON

GROWING TOGETHER

YOUR LIFELINE FOR LOCAL HEALTHCARE



VALUE REPORT



A MESSAGE TO OUR COMMUNITY



At Skyline Health, we believe access to high-quality, compassionate healthcare should never depend on your zip code. As a public Critical Access Hospital, we are proud to serve as a cornerstone of health and healing for the Columbia River Gorge region. Our role goes beyond providing essential medical services — we are a vital part of the fabric that supports our community’s well-being, safety, and resilience.

In rural areas like ours, local hospitals are lifelines. We ensure emergency care, preventive screenings, primary care, and surgical services are available close to home, without the burden of long travel times or delays. This access is especially critical for our seniors, families, and those with limited transportation.

Because we are publicly owned and community-focused, every decision we make is guided by what’s best for you — our neighbors, friends, and families. We reinvest in the people, programs, and partnerships that matter most, keeping healthcare personal, trusted, and responsive.

This Value Report will give you a detailed view of why Skyline Health is so important to our communities. It highlights not only the economics — from local jobs and vendor partnerships to millions reinvested in care — but also our commitment to delivering exceptional, personalized healthcare right here at home.

Thank you for allowing us to serve you. Together, we are building a healthier future — one rooted in rural strength, local care, and shared values.

With gratitude,

Matt Kollman
Chief Executive Officer
Skyline Health



“Skyline Health is more than a hospital— it’s part of our story. A legacy of care, owned by the community, built by and for the people who call this place home.”

— Ricky Knowles, Board Chair, Skyline Health

A MESSAGE FROM RICKY KNOWLES, BOARD CHAIR, SKYLINE HEALTH

As a lifelong resident of White Salmon, I’ve had the privilege of watching our community grow, change, and persevere. And throughout it all, Skyline Health has stood as a cornerstone—quietly, consistently caring for our families, our neighbors, and our future.

Serving as Chair of the Skyline Health Board is more than a responsibility—it’s a calling to care. Like every member of this board, I’m deeply committed to ensuring high-quality healthcare is not a luxury reserved for cities, but a right delivered here at home.

Over the years, I’ve seen Skyline Health evolve to meet the changing needs of the Gorge—from expanding primary care and emergency services to adding outpatient rehab and transitional care. We’ve embraced growth, innovation, and accreditation—but never at the cost of what matters most: the people we serve.

Local healthcare matters. It means faster access in an emergency. It means recovering from surgery near loved ones. It means seeing a provider who knows your name—and your story.

This is what makes Skyline Health special. We are embedded in this community, and every decision we make reflects our commitment to its well-being. We serve because we believe our communities deserve the best. Your health is why we’re here.

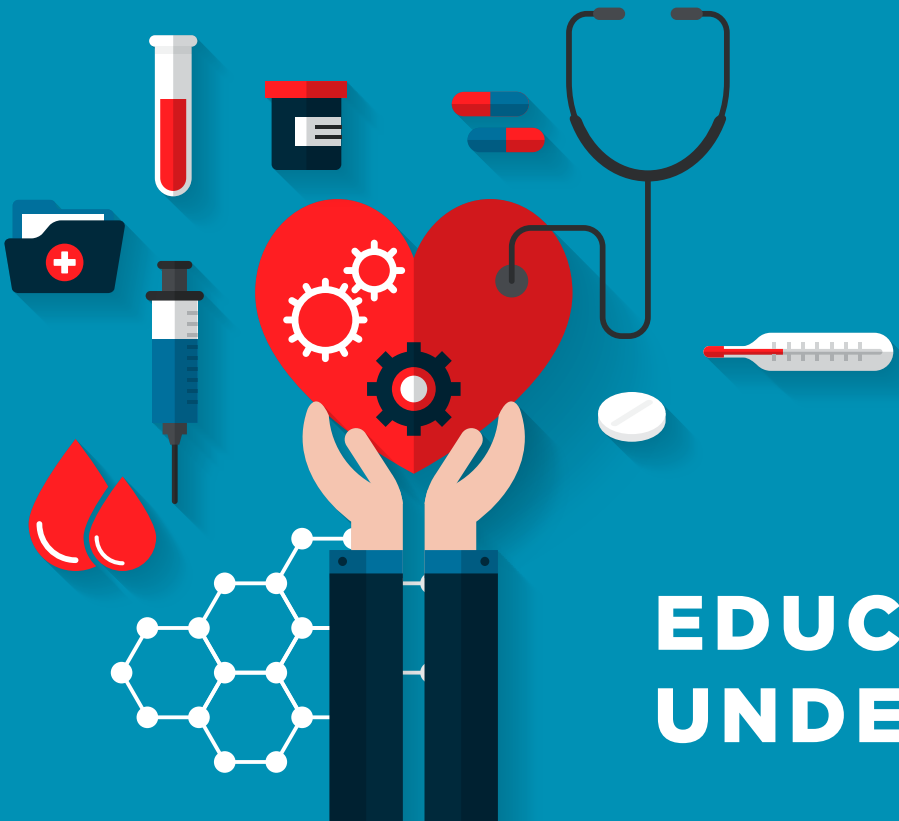
On behalf of the entire Board of Commissioners, thank you for trusting Skyline Health. Together, we’re building something stronger—not just for today, but for generations to come.

With gratitude,

Ricky Knowles
Board Chair
Skyline Health

SKYLINE HEALTH: ROOTED IN CARE. SUPPORTING COMMUNITY.

Skyline Health’s 2025 Value Report reflects our deep commitment to delivering compassionate, high-quality care to the rural communities we serve. From emergency response to outpatient services and community wellness programs, this report highlights the real stories, measurable outcomes, and meaningful partnerships that drive our mission forward. Based in care and strengthened by community support, Skyline Health continues to grow, adapt, and lead with purpose—ensuring every person has access to the care they need, close to home.

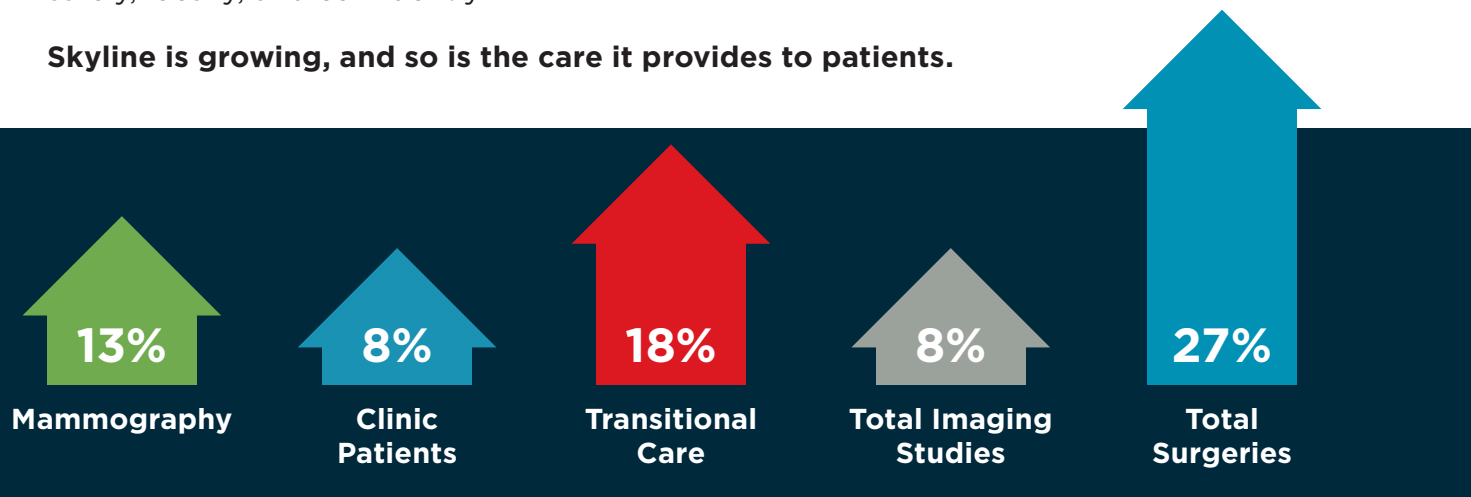


EDUCATION & UNDERSTANDING

BECAUSE WHERE YOU HEAL MATTERS

In rural communities, recovering close to home can make all the difference. At Skyline Health, our Transitional Care program gives patients the support they need to heal safely, locally, and confidently.

Skyline is growing, and so is the care it provides to patients.



That's not just care—it's connection. It's fewer transfers to distant hospitals, and more healing surrounded by family, neighbors, and trusted providers.

Every number tells a story—of mobility regained, independence restored, and lives rebuilt, right here in the Gorge.

Because where you heal matters.

\$1,429,254
total tax funding
Skyline Health receives

\$1,809,197
total we gave back
in charity care and
uncompensated services

WHAT'S A PUBLIC HOSPITAL DISTRICT?

At its heart, a **Public Hospital District** is about neighbors caring for neighbors.

Created by a vote of the community, it's how rural areas like ours ensure everyone — regardless of age, income, or insurance — can access the healthcare they need, **close to home**. These districts are led by **locally elected Boards of Commissioners**, not distant corporate executives. This means decisions are made by people who live here, raise families here, and understand the unique needs of our communities.

Public Hospital Districts aren't driven by profits. We are driven by **purpose** — to deliver high-quality, compassionate care, from emergency services and surgeries to wellness programs and preventive screenings.

We are supported through a blend of **service revenue and local tax dollars**, which are reinvested directly into our staff, facilities, and patient care. That investment is both efficient and deeply impactful.

Consider this:

- **\$1,429,254** — the total tax funding Skyline Health receives
- **\$1,809,197** — the total we gave back in charity care and uncompensated services

That's **in excess of 100% of every tax dollar** directly returned in care for those who otherwise might go without.

This is the value of a Public Hospital District: **local dollars staying local**, invested in health, dignity, and access — for everyone. It ensures your support isn't funding profits — it's funding **people, care**, and the **future of rural healthcare**.

When you support Skyline Health, you're not just supporting a hospital — you're strengthening the safety net for your neighbors, your family, and your community.



COMMUNITY IMPACT

A HEALING HAND IN THE GORGE: SHERRI STARKIN'S GRATITUDE FOR SURGICAL CARE AT SKYLINE

Living in the Columbia River Gorge is often marked by adventure—but for Sherri Starkin, a Lyle resident, her life brought more unexpected challenges than she could have imagined. Through it all, one constant brought her peace and healing: the compassionate care at Skyline Health, and in particular, the extraordinary skill and kindness of one of Skyline's general surgeons.

"We had never been to Skyline before," Sherri recalled. "But after the year we had, we're deeply grateful. We even bought a table at the Foundation's Gala—it was the least we could do."

When Sherri's husband faced a sudden medical emergency requiring an appendectomy, the situation was frightening and urgent. But Skyline Health responded with swiftness and skill—and Dr. Mittelstaedt was there without hesitation.

"DR. MITTELSTAEDT WAS SUCH A CARING PERSON. HE MET US WITH CALM CONFIDENCE AND DEEP COMPASSION."

"To say I was grateful is an understatement," Sherri shared. "Dr. Mittelstaedt was such a caring person. He met us with calm confidence and deep compassion. It was clear we were in capable hands."

In that moment, Skyline became more than a hospital—it became a trusted partner in her family's health. Sherri, who had previously received care in larger health systems, noticed something different in the way Dr. Mittelstaedt and the Skyline team approached their work.

"No one was rushed. No one was watching the clock," she said. "Dr. Mittelstaedt took the time to explain everything. My husband had so many questions, and he answered each one with patience and kindness."

This level of attentiveness left a lasting impression—not just because of the medical expertise, but because of the genuine connection it created.

Beyond surgery, Skyline became a full-spectrum resource for Sherri and her husband. From emergency care to wellness screenings and preventive check-ups, the level of comprehensive, compassionate service stood out.

But it was Dr. Mittelstaedt's role in their story that Sherri returns to most.

"SKYLINE GAVE US CONFIDENCE IN A DIFFICULT TIME. AND DR. MITTELSTAEDT GAVE US CARE WE'LL NEVER FORGET."

"He wasn't just a surgeon. He was a source of comfort when we were scared. He saw us not just as patients, but as people," she said.

Her words speak to the heart of Skyline Health's mission: to be a place where clinical excellence meets true compassion—where providers like Dr. Mittelstaedt bring healing not just through procedures, but through presence.

"Skyline gave us confidence in a difficult time. And Dr. Mittelstaedt gave us care we'll never forget."





THE PROMISE. THE HEALING. THE CLIMB.
THE STORY OF KATHERINE SCHLICK’S HEALING JOURNEY THROUGH
SKYLINE HEALTH’S TRANSITIONAL CARE PROGRAM

“THEY WRAPPED ME IN KINDNESS. IT FELT LIKE SOMEONE HAD FINALLY SAID, ‘YOU’RE SAFE NOW.’”

- Katherine

When Katherine Noe-Schlick suffered two catastrophic strokes caused by capillary bleed outs, her world turned upside down. Paralyzed and emotionally depleted, she faced a long, uncertain road. By her side was her devoted husband, Russ.

“Seeing Katherine go through something so devastating was heartbreaking,” Russ said. “But I made her a promise—we’d get through it together, and I’d bring her home.”

After spending three weeks in a larger metropolitan hospital, Katherine was transferred to a rehabilitation facility in The Dalles, Ore. But the setting wasn’t right. “She needed deeper expertise, more personalized care, and a place where she felt truly seen,” Russ explained.

Her breakthrough came when Margaret Aris, a physical therapist with Skyline Health Rehabilitation and Therapy, heard her story. Moved to help, Margaret advocated for Katherine’s admission into Skyline Health’s Transitional Care Program in White Salmon, Wash.

The move was life-changing.

“When I arrived at Skyline Health, I felt something I hadn’t felt in a long time—peace,” Katherine said. “I wasn’t just a patient in a bed. I was a person. And they saw me.”

Katherine spent three months at Skyline Health healing—physically, emotionally, and spiritually. Surrounded by skilled, compassionate staff, she worked daily to regain strength. “I was in a wheelchair, scared, unsure of what would happen,” Katherine recalled. “But the moment I arrived, they wrapped me in kindness.”

Progress was slow at first, but every small victory was celebrated. Her determination met their encouragement—and together, they moved forward. “They believed in me even when I didn’t believe in myself,” she said. “This belief helped me heal.”

After being discharged, she continued in-home physical therapy. Within just

I KEPT MY PROMISE TO BRING HER HOME— THANKS TO THE CARE SHE RECEIVED AT SKYLINE.”

- Russ

three weeks, she no longer needed her wheelchair.

Russ remembers the moment her strength began to return. “For the first time since her strokes, I could exhale,” Russ said. “I kept my promise to bring her home—and this was only possible because of the excellent care she received through Skyline Health’s Transitional Care Program.”

Now living in Mt. Hood, Ore., Katherine reflects on her journey with gratitude. “Skyline didn’t just help me heal—they helped me feel whole again,” she said. “If you or someone you love ever needs transitional care close to home and full of heart, Skyline is exactly where you want to be.”

Russ carries one lasting image: “From her room, you could see the helipad and the Columbia River. Watching the water move—it was calming, even healing. It reminded me just how far Katherine had come—and the strength she gained to keep climbing.”

MORE THAN MEDICINE: The Economic Impact of Skyline Health

When people think of a hospital, they often picture emergency rooms, surgeries, and checkups. But at Skyline Health, we are so much more than that — we are one of the most powerful economic engines in the Columbia River Gorge.

As a public Critical Access Hospital, Skyline is deeply woven into the fabric of our rural communities. We are one of the largest employers in the region, supporting over 200 full- and part-time jobs — from nurses and lab techs to IT, facilities, and administrative staff. These aren't just jobs; they're livelihoods that sustain families, support local businesses, and keep small-town life strong.

Keeping healthcare local doesn't just improve access — we serve the community. Every time a patient gets care at Skyline instead of traveling out of town, money stays here — fueling restaurants, gas stations, pharmacies, and small businesses.

Because we're a Public Hospital District, we don't answer to shareholders — we answer to you. That means every dollar we invest goes back into our community. In 2025 alone, Skyline contributed:

\$15 million + in payroll	\$2.8 million + in locally sourced goods and services	\$1.8 million + in uncompensated care
-------------------------------------	--	---

Skyline Health is more than a place to get care — we're a partner in the health and prosperity of our region. When we thrive, our entire community thrives. We help attract families and businesses, give residents a reason to stay, and create hope that the next generation can build a future right here at home.

When you support Skyline, you're not just supporting healthcare — you're investing in the future of the Columbia River Gorge.



SKYLINE CARES. NO MATTER WHAT. Because Everyone Deserves to Be Seen, Treated, and Respected

At Skyline Health, we don't ask why. We simply care. Whether it's your first visit or your fiftieth, you'll be met with kindness and dignity—because needing help should never cost your pride.

Our Financial Assistance Program offers free or reduced-cost care to those who need it most. No judgment. No shame. Just support. Because when life gets hard, your health shouldn't be another burden.



SAFE CHOICES, SAVED LIVES How Skyline Health Quietly Protects Our Community, Every Day

At Skyline Health, we know that keeping a community healthy means looking out for each other in ways that often go unseen. That's why we've made it easier—and safer—for people to make the right choice, even in life's hardest moments.

Our **drug take-back container** gives people a safe and responsible way to get rid of unused or expired medications. In **2025**, we collected **134 pounds** of medications—helping prevent misuse, accidental poisoning, and protecting our environment too.

But we didn't stop there.

Our **free Narcan (naloxone) vending machine**, located in the Emergency Department and available 24/7, puts life-saving overdose medication in the hands of anyone who needs it—no questions asked. In **2025**, we distributed **352 doses**, each one a chance to reverse an overdose and give someone another shot at life.

Because even if you've never needed these services, someone in our community has. And even if you think it's not a big deal—**we know it is.**

We offer these programs quietly, consistently, and with care. Not for credit, but because it's the right thing to do. Because prevention, safety, and second chances are part of what it means to be **truly community-focused.**

VALUE REPORT THE HEART OF OUR CARE

At Skyline Health, care isn't just what we do—it's **who we are.**

Behind every visit is a story, a worry eased, a hand held. We meet each person with compassion, dignity, and the belief that everyone deserves to feel safe, valued, and truly cared for.



HERE'S WHAT OUR PATIENTS ARE SAYING:

We're proud to be rated **4.8 stars on Google and climbing**—but more than that, we're proud of the trust behind it.

Because at Skyline, every interaction is a chance to offer care that's respectful, human, and real.



Brilliant team of professionals! Fabulous office with a terrific view. I have been taken care of by them for 4 years. Always a great experience.
- Laura



I can't say enough positive things about Skyline Hospital. The surgeon was wonderful. The staff was above standard. Everyone was smiling and happy.
- V



The Doctors at Skyline Health are great. The staff are courteous caring people and they listen. I'm now healthier because of their team and the doctors associated with them.
- George



ADVANCING CARE ADMISSIONS

EXPANDING SURGICAL CAPACITY IN RURAL SOUTHWEST WASHINGTON A COMMUNITY UNITED FOR BETTER HEALTH

Skyline Health is committed to ensuring that everyone in our rural region has access to high-quality surgical care—without needing to travel long distances or face harmful delays. Our current surgical facilities, built decades ago, no longer meet the needs of our growing patient population or the demands of modern healthcare.

Skyline has experienced growth between 8% and 40% across services including acute, transitional, and observation care. We’ve seen a continued increase in outpatient surgeries, emergency general surgery, and surgical oncology cases. Yet, outdated space limitations—including the absence of a formal Post-Anesthesia Care Unit (PACU)—restrict our ability to safely and efficiently meet this rising demand. Patients are left waiting, or forced to leave the area for care that should be available close to home.

That’s why we launched the Advancing Rural Surgical Services Project—a strategic plan to renovate and expand Skyline’s surgical facilities, modernize perioperative workflows, and recruit new specialty providers to serve Klickitat County, Skamania County and beyond. This project is not just about infrastructure—it’s about equity, access, and saving lives.

A modern surgical center will:

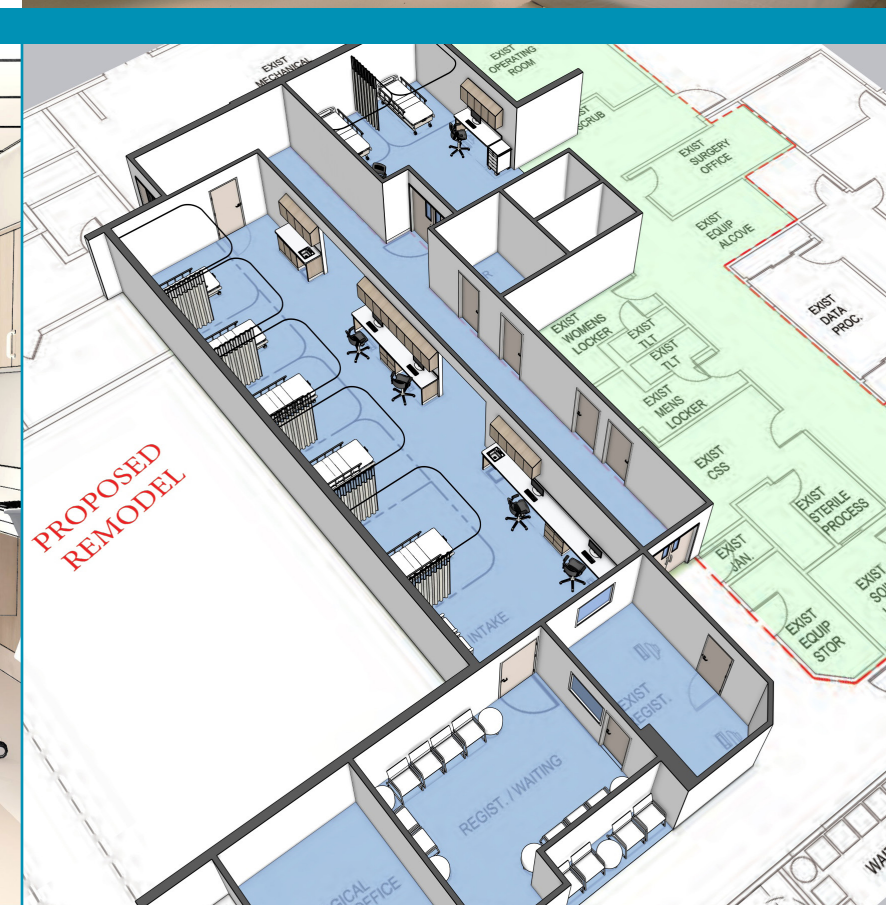
- Improve outcomes by keeping patients near family and support systems
- Reduce travel and financial hardship for rural residents
- Increase capacity to meet today’s needs and tomorrow’s growth
- Create more efficient, safe, and patient-centered surgical care
- Strengthen local recruitment and retention of providers

This project is backed by a powerful coalition of healthcare providers, government leaders, businesses, and community organizations who know firsthand how critical this investment is to the future of rural healthcare.

PROJECT FUNDING AND TIMELINE

Skyline Health requests \$3 million toward the \$7.3 million total cost for the Skyline Advancing Rural Surgical Services Project.

Skyline plans to break ground in 2026 and open the new space to better serve the community in 2027.



365 SUPPORTING PATIENTS WITH 365 DAYS A YEAR OF SURGICAL COVERAGE

Skyline is pleased to bring Steve Matous, MD to our community. The addition of Dr. Matous allows Skyline to provide general surgery coverage for our community 365 days per year. This is great news and a big step forward for Skyline. Skyline's surgical volume has increased 27% year over year, allowing Skyline the opportunity to recruit an additional surgeon. Thank you for your support of our surgery department.

WELCOMING DR. STEVEN MATOUS

Dr. Matous comes to Skyline from a 30-year surgical career in Vancouver, WA following training at Baylor University, a residency at the University of Massachusetts, and a fellowship in Surgical Endoscopy and Minimally Invasive Surgery at the University of Maryland. He has been a Fellow of the American College of Surgeons since 1998. Dr. Matous brings extensive experience across a broad range of general surgical procedures, with particular clinical interests in hernia repair and anti-reflux surgery.



EXPANDING OUR SPORTS MEDICINE TEAM



WELCOMING DR. RYAN PETERING

Skyline has added Dr. Ryan Petering to our growing list of local physicians. Dr. Petering is dual certified in both Family Medicine and Sports Medicine. As an expert in musculoskeletal health, Dr. Petering brings new resources for sports injuries and everyday aches and pains. His experience as a team doctor for both the University of Oregon and Nike Pro athletes are a welcome addition to the Gorge.



BRINGING IV THERAPY CLOSER TO HOME

In rural areas, getting IV therapy shouldn't mean long drives and missed work. Skyline Health's **Nursing Outpatient Services** makes high-quality IV treatments available right here at home—no hospital stay required.

Whether for chronic conditions, infections, or recovery, our team provides timely, compassionate care close to where patients live.

As demand grows, so will we—because **quality care should always be local, accessible, and focused on you.**

**Skyline Health does not offer chemotherapy services*

CARING WITH EXCELLENCE: NATIONAL STANDARDS, LOCAL HEART

As a fully accredited Rural Health Clinic, Skyline Health Medical Clinic has maintained a **zero deficiency** rating. This rare achievement means we passed Medicare's most rigorous review with no corrections needed.

Why does it matter? Because nearly **6,000 patient** visits last year were met with care that meets the highest national standards—delivered by people who know you, live here, and are committed to this community.

We don't pursue excellence for praise. We do it because **you deserve the best care, close to home.**

TRANSITIONAL CARE: HEALING CLOSE TO HOME

In rural communities, recovery can be challenging when care is far away. Skyline Health's **Transitional Care program** offers personalized support for patients healing after illness, injury, or surgery—right here, close to family and home.

In 2025, area residents spent a combined **1,332** days in Skyline's transitional care program, helping people across Klickitat, Skamania, and Hood River counties regain strength and independence.

Take Scott, for example. After surgery, he faced a long road to recovery. Thanks to Skyline's daily therapy and compassionate support, he healed locally—and returned home stronger and more confident.

At Skyline, we believe **where you heal matters.** That's why we're proud to provide expert care, close to the people and places you love.



SUPPORTING OUR PEOPLE



STEADY LEADERSHIP, DEEP ROOTS

At Skyline Health, leadership isn't just about titles—it's about trust, heart, and staying power. Together, our leadership team brings more than **107 years of combined service** to the organization. That kind of longevity isn't common—and it says a lot.

It reflects a true, lasting commitment to the health of our community. These are leaders who have walked alongside our patients, supported our staff through change, and stayed the course through challenges and growth. Their deep institutional knowledge and lived experience bring clarity, continuity, and confidence to every decision.

But it also means they're personally invested. These aren't leaders passing through—they're part of this community. They live here, raise families here, shop at local stores, and contribute to the strength of our local economy.

And maybe most importantly, their long-standing presence speaks to the culture of Skyline Health. A place where people stay because they believe in the mission, feel connected to one another, and know their work matters.

Leadership with roots this deep isn't just about stability. It's about shared values, long-term vision, and a lasting promise to care—for our patients, our team, and our region.

LEADERSHIP PHILOSOPHY

At Skyline, we believe the job of a leader is... to help all team members be successful; to provide an environment where clarity, compassion, and collaboration are available to everyone; to promote belonging; to enable work that is full of purpose, and to facilitate every team member's personal connection to that purpose.

Skyline's leaders value... compassion, community, integrity, health equity, empathy, action, authenticity, accountability, gratitude, curiosity, innovation, constructive candor, and most importantly – people.

As leaders, we want our teams to feel... supported, respected, informed, effective, proud, appreciated, trusted, loved, and both influential and invested in their work environment.

Skyline leaders will... ask questions; frame problems and ask staff to help solve them; actively listen with respect, compassion, and gratitude; communicate clearly, openly, and honestly; provide a safe environment to share ideas and respectfully discuss disagreements; assume positive intent in our interactions with others; promote purpose over production; vigorously and relentlessly pursue excellence and innovation for our team and the communities we serve.



SKYLINE HEALTH RECOGNIZED FOR PUTTING PEOPLE FIRST

Last year Skyline Health was named one of the **Top 20 Most Socially Responsible Critical Access Hospitals** in the nation by the Lown Institute.

Out of nearly 900 similar hospitals, Skyline stood out for delivering care that is fair, effective, and community-focused. This honor reflects our commitment to equity, integrity, and doing what's right—not just medically, but morally.

At Skyline, we believe rural healthcare should reflect local values. This recognition belongs to our patients, providers, and community who make people-centered care possible every day.



FOUNDATION & PHILANTHROPY

LEGACY

\$500,000+

State of Washington
Department of Commerce

LEADER

\$250,000-\$499,999

M.J. Murdock Charitable Trust
Klickitat County Board of
County Commissioners
The Firstenberg Foundation

INNOVATOR

\$125,000-\$249,000

Cordell R. Papstein

PIONEER

\$75,000-\$124,999

Ted & Sylvia Brown
Bruce & Mary Stevenson
Foundation Fund C
Empire Health Foundation

TRAILBLAZER

\$40,000-\$74,999

Bob & Heather Weisfield
Erwin Sweighofer
Crestline Construction
Juanita M. Schmid Estate
The Schreiber Family
Charitable Foundation
Oracle Cerner
Stevenson Family Trust

VISIONARY

\$25,000-\$39,999

White Salmon Lions Club
Dr. Ray & Joyce Fitzsimmons
Bruce & Mary Stevenson
Foundation Fund A
First Interstate Bank
John & Laura Cheney
Aaron & Katie Kreps
Rees Stevenson
USJ
Dawn Larsen & Doug Ealley
Peggy & Jon Ohlson
Les & Dee Dewey

BUILDER

\$10,000-\$24,999

Robb & Theresa Kimmes
Columbia Bank
Ricky & Amy Knowles and Family
Dorothy M. Henkle Estate
Leland Gulstine & Margee Berry
Roger & Janet Holen
Juris & Jo Dean Sarins
NW Emergency Solutions
Sue Massart
Best Western PLUS Hood River Inn
Janet & Larry McCutcheon
Leo & Betty Gauvin
John & Diane Matthews
BNSF Railway Foundation
One Community Health
NorthShore Medical Group
Skyline Health
Don & Carol Schaack
Tom & Bonnie Reynolds
Dr. James & Cindy Janney
Doug & Leslie Campbell
Blue Room Architecture & Design

PATRON

\$7500-\$9999

Soroptimist International of
Mt. Adams
McCoy-Holliston Insurance
Bell Design Company
Paul & Sue Pennington
Rudy & Keren Dierickx
White Salmon - Bingen Rotary
Club Foundation
Jason & Shelly Spadaro
Chuck & Camille Hinman
Kirk Thomas
Coverys- Washington Casualty
Company
OJ Hecomovich
Peter & Lorrie Knowles
Gary & Mary Baldrige
David & Jane Poucher
Matt & Staci Hanson
Barbara Johnson Estate

PATRON

\$7500-\$9999

Ben & Dede Marberry
Brad & Caroline Roberts
Kirk Barkhimer & Jenna
Newcomb Barkhimer
Wallace & Priscilla Stevenson
A & J Market
Bill & Heather Whidden
Steve & Dawn OpBroek
Parker, Smith & Feek
Schuepbach Builders
Juliet & Alexis Pouillon
Lloyd & Loretta DeKay
Insitu
Carl & Kathleen McNew
Rick & Jane Damschen

CHAMPION

\$5000-\$7499

A&E Heating & Air, Inc.
Intalere - Vizient
Jonathan Blake
Kelly Kreps & Kerri Kent
Anesthesia Associates Northwest
LLC
Dr. Erica Didier & Matt Swihart
Bill & Sheree Clark
Copper West Real Estate
Bob & Sherry Van Alstine
Erik & Tracy Barkhimer
Skamania Lodge Adventures
Dr. Alia & Eric Breon
Diane Barkhimer
John L. Scott Foundation
Terry Phillips
Richard & Ann Cline
Kathryn & John Thomas
Martha Stevenson
Marc & Wendy Dinnerstein
Dr. Tyler & Stephanie Mittelstaedt
John & Kari DiPalma
Jim & Deb Lambo
Howard S. Wright, a Balfour
Beatty company
David & JR Windsor
Gary Clouse
Dave & Christy Thorp
Dingus, Zarecor & Associates
Independent Order of Odd
Fellows Lodge
Proactive Financial Management
Red Electric Foundation
Hi-School Pharmacy
Melvin & Carol Berglund
Sally Hertz
Ted Hansen
Trails End Trading Company

ADVOCATE

\$2500-\$4999

Dr. Gianna & Denis Scannell
Rick & Sarah Melching
Providence Hood River Memorial
Hospital
Hannah Liss & Carter Myers
Stanley & Sandi Dickey
Dr. Cindy Horton & Kenneth
Schleicher
Beth Robison
Hire Electric, Inc.
Domino's Pizza the Gorge
Teunis & Patricia Wyers
Dr. Russell M. & Margie Smith
Mid-Columbia Medical Center
Ron & Linne Dodge
Della Henderson
INB
Dr. Christopher & Sarah Samuels
HD Fowler
Steve & Nancy Sliwa
Hunsaker Oil Company
Lesley Pattison
Dr. David & Robin Hindahl
Darold & Janet Ward
Pat & Bill Paulsen

Steven Larsen & Kimberlee
Creaser Larsen
Ron & Cyndee Kurahara
Domonique & Derek Krentz
Erik Kerr
Heery Design
SDS Lumber, LLC
Bob & Dianne Blades
Jan & Kevin Callow
Bob & Joan Budnick
Foster Pepper PLLC
Dr. Novae Simper
Ricky & Nancy Knowles
Myrna & Rexford Clements
George & Berneith Hall
Maria Foley
Drs. Allen LaBerge & Alicia
Gimenez
Shelly Skiles & Tom Wooding
Kerri Kent
Heidi & Don Struck
Randy & Miriam Knowles
Gail Brownmiller
Gorge Networks
Imelda Padilla
Jim & Li Poe
Gorge Recovery Service
Molina Healthcare of WA
Amerigroup, WA
Dr. Gus Faller
1st Security Bank
Dorothy Henkle
Dave & Virginia Baker
Richard & Suzanne Pratt
A Kidz Dental Zone
Drs. Mendy & David Maccabee
Mary Margaret Evans & Duncan
Holaday
Mt. Adams Ministerial
Association
David J. Wiltsie
Hans & Donna Winterlich
Lorraine Lyons
Dee Dee Vallier
Westby Associates, Inc.
Vernon & Dawn Mohlis
Karalee & Jay Holtmann
Stoner & Deborah Bell
FLYNN BEC LP
Mary Lou Shattuck

SUPPORTER

\$1000-\$2499

Dr. Charles & Sandra Haynie
Michael & Paula O'Gorman
Drs. Troy & Liette Witherrite
Michael & Harriet Madden
Leila Prestia
Drs. Kathy Grewe & Robert
Florek
Lloyd & Deborah Olson
Brian & Kathy Edger
Dr. Jeff Stageberg & Carrie
Benson
Bill Ward
Sandy Dean
Chevron
Anderson Family Fund of the
Gorge Community Fund

Robin & Mitch Panzer
Everybody's Brewing
Norm Johnson
Gary & Elaine Ward
Drs. Ellen Wenzel & Zarko Kajgana
Renee & Alan Warner
Mike Sandlin
Tom & Teddy Parkinson
Northwest Hydraulics, Inc.
Scott & Amy Kasenga
Josh & Tisie Brasuell
Domaine Pouillon Winery
Libby & Chris Childers
Sally Ruggles
Sean Ciemiewicz
Becky & John Petty
Kylan & Jake Pimley
Amerinet/HRS
Gayle & Jay Palmer
Vern & Karen Harpole
Senator Curtis King
Debra Sears
Korrie Dodge
Sverre & Elaine Bakke
Howard & Christy Kreps
Robby Bell Jr.
Tamara & Joseph Kaufman
Devry & Laurie Bell
Mike & Leilani Denham
Bill Hollander
Drs. Kaerli & Carl Christensen
Dr. James Yamazaki
Washington State Arts Commission
(ArtsWA)
Inland Imaging
Joe & Katie Kula
Ron & Geraldine Logan
Clie & Stella Harr
Richard & Katherine Kahler
Champion International
George Underwood
Sean & Lori Harrod
Kathy & Mike Gilderhus
Robert Hogfoss
Stefanie Boen
John Gillanders
Riverview - White Salmon
The Bruin Club
Mary Wade
AJ Valencia & Madé Vallejo
Debra Short NP
Double Mountain Brewery & Cidery
Michele Sturdavant
Joan Barrett
Stephanie Irving
Mike Hendrickson
Joe & Linda Carroll
Vito & Keli Aiello
Kent & Barbara Bleakley
Strawberry Mountain 24/7 Gym
Jolene & Patrick Wedrick
Craig & Tami Trummel
David & Marilyn Elkins
Ben & Diann Beseda
Patricia Martin Bunch
Jim Borden
Sharon Philpott
Chris & Wendi Dierickx
Susan Henness & Bill Muir
Charles & Susan Hogue

SUPPORTER (cont.)

Pat & Kari Albaugh
 James & Joan Titus
 Mark Sandoz
 Erinn Quinn
 Billie Deo
 Jessie & Andres Ramos
 Hong Kreiser
 David Griffith
 Alliant Insurance Services
 Lynn Sutton
 Steve & Judy Gibson
 Ned & Jean Vaivoda
 Pamela & Michael Morneau
 MPM Contracting
 Dolores Predeek
 Clint & Latsy Walker
 Contech Engineered Solutions, LLC
 Alan & Judy Carlock
 Dr. I. Allen & Jocelyn Gay
 Maria Henkle
 Nanette & John Stevenson
 Ferguson Waterworks
 Todd & Peggy Hawkinson
 Bob & Kristie Niehaus
 Steve & Diane Maier
 Charlie & Amanda Kitchings
 Robert & Debbie Chamberlain
 Maira & Travis Schuster
 Kevin Liddiard & Ashley Howe
 Dan & Amy Cook
 Megan & Andy Dixon
 Jennie Martin
 Leanne Hogie
 Dr. Michael & Frances Beug
 Gage Sauter Construction
 Donald J. & Sherri K. Starkin
 Amanda McDonald
 Antonio & Maria Quintana
 Debra Reed & Steve Kelly
 Denise A. & Bruce W. Anderson
 Kathleen Doyle-White
 Larry Murphy
 PSS WorldMedical
 Ray Schultens Motors
 Sandy Brecker
 Shirley Merritt
 Katherine Berman
 David & Jan Clark
 Aaron & Katie Stanton
 Rich & Dee Stanton
 Ryan Vassar

COMMUNITY SUPPORT FOR FEDERAL INVESTMENT

The following organizations and individuals have formally endorsed the Skyline Advancing Rural Surgical Services Project and submitted letters of support for Skyline Health's federal appropriations request:

Health Partners

- Anesthesia Associates
- ER Solutions
- Pacific Imaging Associates
- One Community Health (CEO Jennifer Griffith, Medical Director Dr. Laberge)
- Klickitat Valley Health
- Klickitat County Emergency Medical Services District No. 1
- Klickitat Department of Health
- SW Washington Accountable Community of Health
- The Rural Collaborative
- Association of Washington Public District Hospitals
- Washington State Department of Health
- Skyline Health & Skyline Health Foundation

Governmental Leaders

- Washington State Senator Curtis King
- Washington State Representatives Chris Corry & Gina Mosbrucker
- Klickitat County Board of Commissioners
- City of White Salmon
- Mayor of Bingen & Mayor of White Salmon
- Bingen/White Salmon Police Department
- Mid-Columbia Economic Development District

Community Partners


- White Salmon Valley School District & Education Foundation
- Rotary Club of White Salmon and Bingen
- Skamania & Mt. Adams Chambers of Commerce
- Soroptimist International of Mt. Adams
- Our Klickitat Prevention Coalition & One Prevention Alliance
- Culture Seed
- The Next Door Inc.
- Washington Gorge Action Programs

Business Partners

- Aerovel
- Crestline Construction
- Everybody's Brewing
- Domaine Pouillon Winery
- Anchi Winery
- Bell Design
- Blue Room Architecture
- Little Oak Montessori
- Optimist Printers
- Innovative Composite Engineering
- First Interstate Bank



2025 DONOR IMPACT

 PATIENT CARE GRANTS TOTAL DISTRIBUTED: \$102,596		
PROGRAMS	Reach Out & Read Programs	\$400
EDUCATION	Community Health Fair	\$2,500
EQUIPMENT	Surgery Sterilizer	\$83,724
	Rehabilitation Wheelchairs	\$13,105
	Rehabilitation Goggles	\$2,750
	Fire Mountain Medical Pharmacy	\$117

 COMMUNITY HEALTH GRANTS TOTAL DISTRIBUTED: \$12,000	
WAGAP: Feeding the Hungry	\$5,000
WAGAP: Youth Center Safety Supplies & Training	\$3,000
CULTURE SEED: Support of Contract Therapist	\$3,000
SAFESPACE: Support of Volunteer Program	\$1,000

 HEALTHCARE SCHOLARSHIPS TOTAL DISTRIBUTED: \$10,500	
HENKLE AWARD (healthcare)	\$7,500
BROWN AWARD (nursing)	\$3,000

 BREAST HEALTH FUND TOTAL DISTRIBUTED: \$8,189	
Mammograms and diagnostic testing for those uninsured or underinsured.	

TOTAL DISTRIBUTED IN 2025
\$133,284.53



SKYLINE

WHITE SALMON HEALTH WASHINGTON

**WE ARE COMMITTED TO DELIVERING EXCELLENCE
AND COMPASSIONATE CARE TO ALL WE SERVE AND PROUD
TO BE YOUR HEALTH CARE PROVIDER OF CHOICE.**

myskylinehealth.org

Phone: 509.493.1101 | Fax: 509.493.4607
211 Skyline Drive, White Salmon, WA 98672